

89-Deep Skirt
Continuous Threads
Serrated with Radius and Matte Finish

Comet Part Number: 1340-0002

Product Benefits

- General Purpose closure
- Ribbed sides for easy grip
- FDA approved

Markets

- ❖ Agricultural products
- ❖ Dressing and Sauces
- ❖ Food
- ❖ Food Services
- ❖ Industrial Applications
- ❖ Medical Products
- ❖ Cosmetics
- ❖ Pharmaceuticals

Closure Specifications

- Diameter: 89mm
- Thread Profile: 89-444
- Neck Finish: 89-444/470
- Cap Height: 0.692 inches
- Closure Top: Matte
- Closure Sidewall: Ribbed
- Material: PP

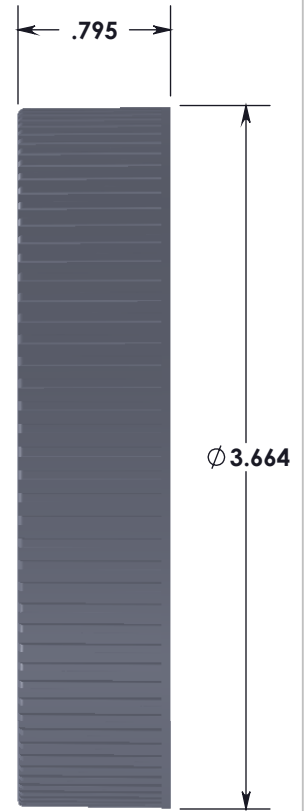
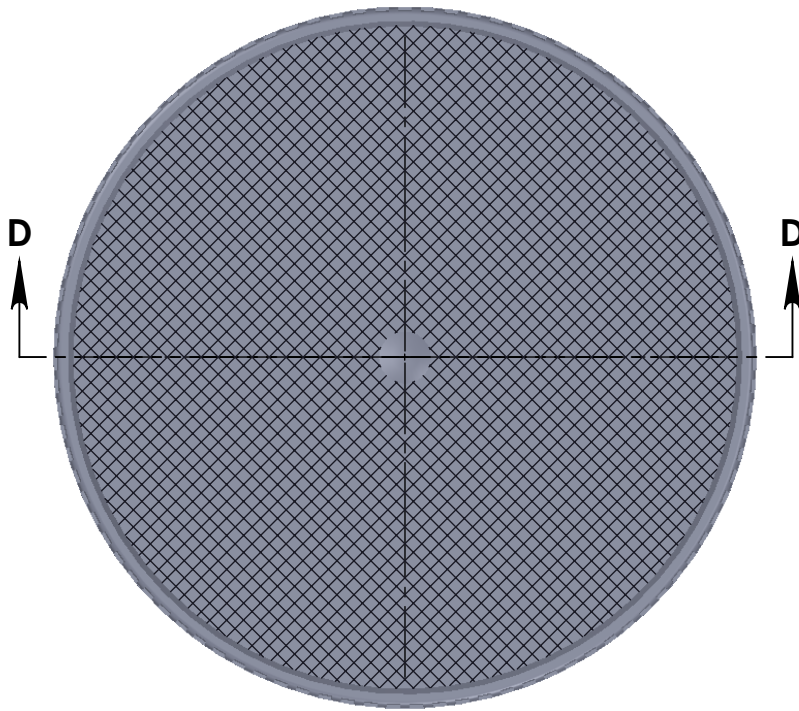
Options

- Available in white, black, standard colors as well as custom colors
- Custom embossing available
- Both lined and unlined options available

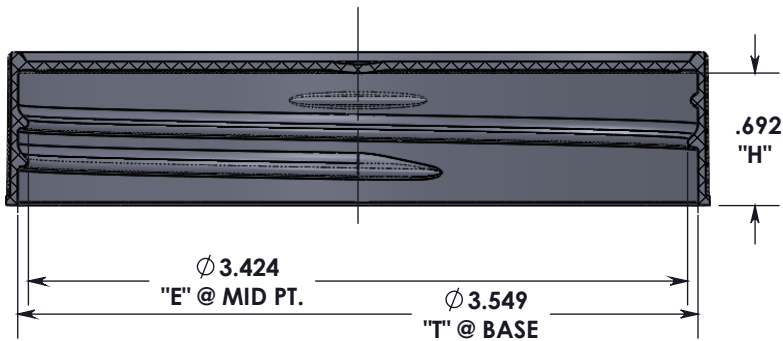
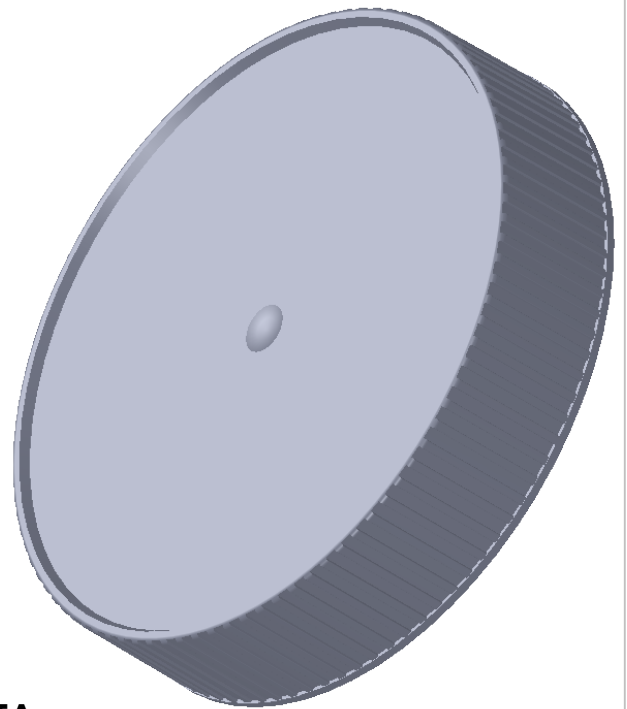
Packaging and Logistics Information

Pack Type	Pallet Dimensions	PCS/CTN	CTNS/skid	PCS/skid	Freight
Skid	48 x 44 x 86	500	24	12,000	FOB Pitman, NJ 08071

Location:
 651 Lambs Road, Pitman, NJ 08071



TOP SURFACE AND RIBS ARE FINISHED MATTE
 UNSPECIFIED EXTERIOR AREAS FINISHED SPI-A3
 UNSPECIFIED INTERIOR AREAS FINISHED SPI-B2



SECTION D-D

**THREAD DATA:
 SPECIAL 89-444/470 FINISH
 .200 PITCH (5 TPI)
 APPROX 1-3/8 TURNS**

ADVERTISING DRAWING
 NOT FOR QUALITY CONTROL

DIMENSIONS ARE IN INCHES	
TOLERANCES:	
FRACTIONAL	±1/32
ANGULAR	±1/2
TWO PLACE DECIMAL	±.03
THREE PLACE DECIMAL	±.015

PROPRIETARY AND CONFIDENTIAL

THE INFORMATION CONTAINED IN THIS DRAWING IS THE SOLE PROPERTY OF COMET TOOL Co. ANY REPRODUCTION IN PART OR AS A WHOLE WITHOUT THE WRITTEN PERMISSION OF COMET TOOL Co. IS PROHIBITED.

MATERIAL
POLYPROPYLENE
 DRAWN BY
JJM



COMET TOOL COMPANY

651 LAMBS RD. PITMAN, N.J 08071-2042

TITLE: SPECIAL 89-444/470 CT CLOSURE SERRATED W/RADIUS & MATTE FINISH					
PLASTIC PART NO. 1340-0002	PLASTIC PART REV. *	DWG. NO. 1340-0002	SIZE A	REV *	DATE 7/21/21
SCALE: 1:1				SHEET 2 OF 2	