

89-400
Continuous Thread Closure
Matte Finish

Comet Part Number: 1340-0012

Closure Specifications

Diameter: 89mm

Thread Profile: 400

Neck Finish: 89-400

Cap Height: 0.533 inches

Closure Top: Matte

Closure Sidewall: Ribbed

Material: PP

Product Benefits

- General Purpose closure
- Fine-ribbed sides for easy grip
- FDA approved

Markets

- ❖ Agricultural products
- ❖ Dressing and Sauces
- ❖ Food
- ❖ Food Services
- ❖ Industrial Applications
- ❖ Medical Products
- ❖ Cosmetics
- ❖ Pharmaceuticals

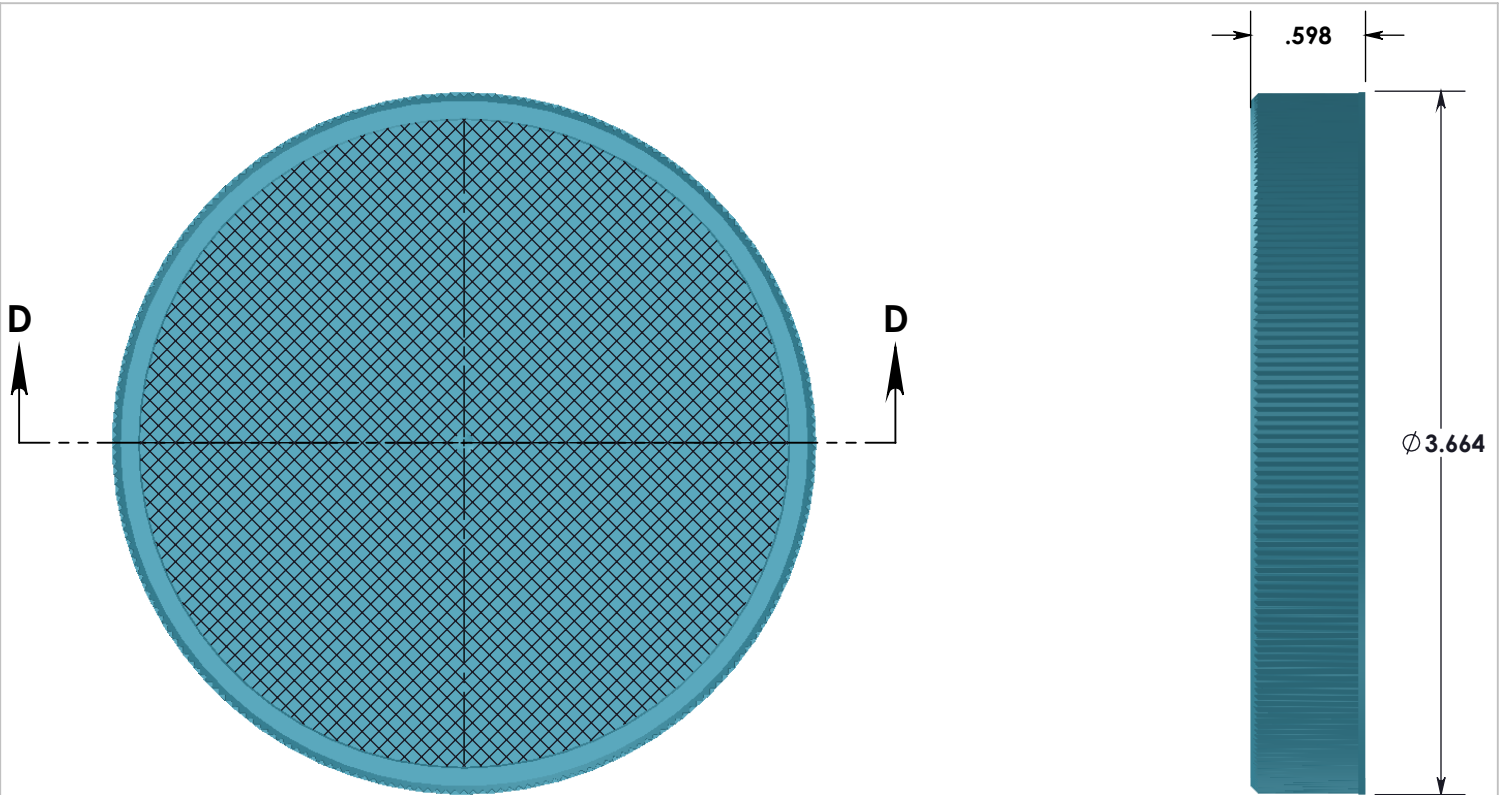
Options

- Available in white, black, standard colors as well as custom colors
- Custom embossing available
- Both lined and unlined options available

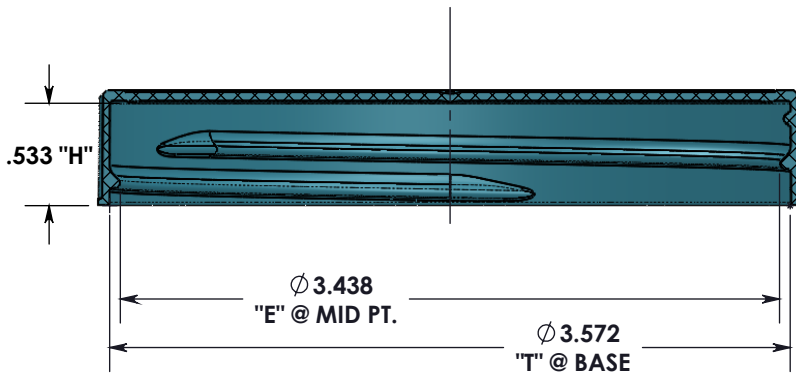
Packaging and Logistics Information

Pack Type	Pallet Dimensions	PCS/CTN	CTNS/PALT	PCS/skid	Freight
Skid	48 x 44 x 86	650	24	15,600	FOB Pitman, NJ 08071

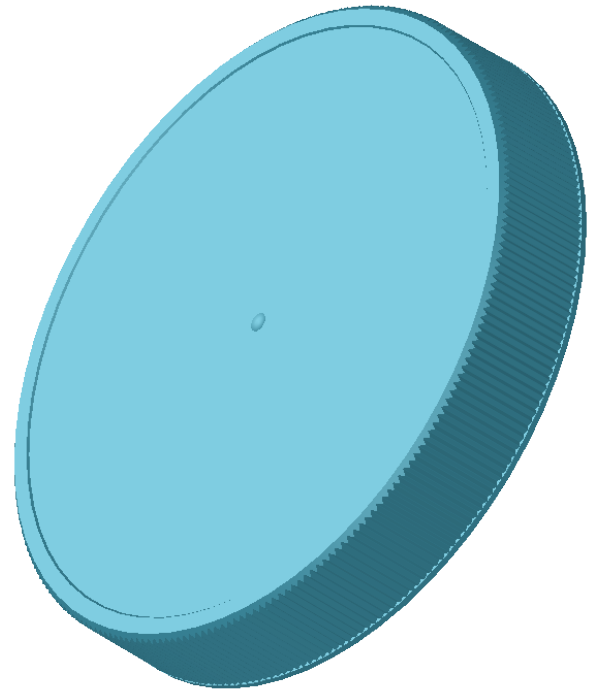
Location:
651 Lambs Road, Pitman, NJ 08071



TOP SURFACE AND RIBS ARE FINISHED MATTE
 UNSPECIFIED EXTERIOR AREAS FINISHED SPI-A3
 UNSPECIFIED INTERIOR AREAS FINISHED SPI-B2



SECTION D-D



THREAD DATA:
89-400 FINISH
.200 PITCH (5 TPI)
APPROX 1-1/8 TURNS

**ADVERTISING DRAWING
 NOT FOR QUALITY CONTROL**

UNLESS OTHERWISE SPECIFIED:		PROPRIETARY AND CONFIDENTIAL THE INFORMATION CONTAINED IN THIS DRAWING IS THE SOLE PROPERTY OF COMET TOOL Co. ANY REPRODUCTION IN PART OR AS A WHOLE WITHOUT THE WRITTEN PERMISSION OF COMET TOOL Co. IS PROHIBITED.		 COMET TOOL COMPANY 651 LAMBS RD. PITMAN, N.J 08071-2042	
DIMENSIONS ARE IN INCHES FRACTIONAL ± 1/32 ANGULAR ± 1/2° TWO PLACE DECIMAL ± .03 THREE PLACE DECIMAL ± .015		MATERIAL POLYPROPYLENE		TITLE: 89-400 CT CLOSURE FINE SERRATED W/CHAMFER & MATTE FINISH	
DRAWN BY JJM		PLASTIC PART NO. 1340-0012	PLASTIC PART REV. *	DWG. NO. 1340-0012	SIZE A
				REV *	DATE 7/21/21
				SCALE: 1:1	
				SHEET 2 OF 2	