

83-444

## Continuous Threads Serrated with Matte Finish

Comet Part Number: 1340-0001

### Closure Specifications

Diameter: 83mm

Thread Profile: 444

Neck Finish: 83-444

Cap Height: 0.700 inches

Closure Top: Matte

Closure Sidewall: Ribbed

Material: PP

### Product Benefits

- General Purpose closure
- Fine-ribbed sides for easy grip
- FDA approved

### Markets

- ❖ Agricultural products
- ❖ Dressing and Sauces
- ❖ Food
- ❖ Food Services
- ❖ Industrial Applications
- ❖ Medical Products
- ❖ Cosmetics
- ❖ Pharmaceuticals

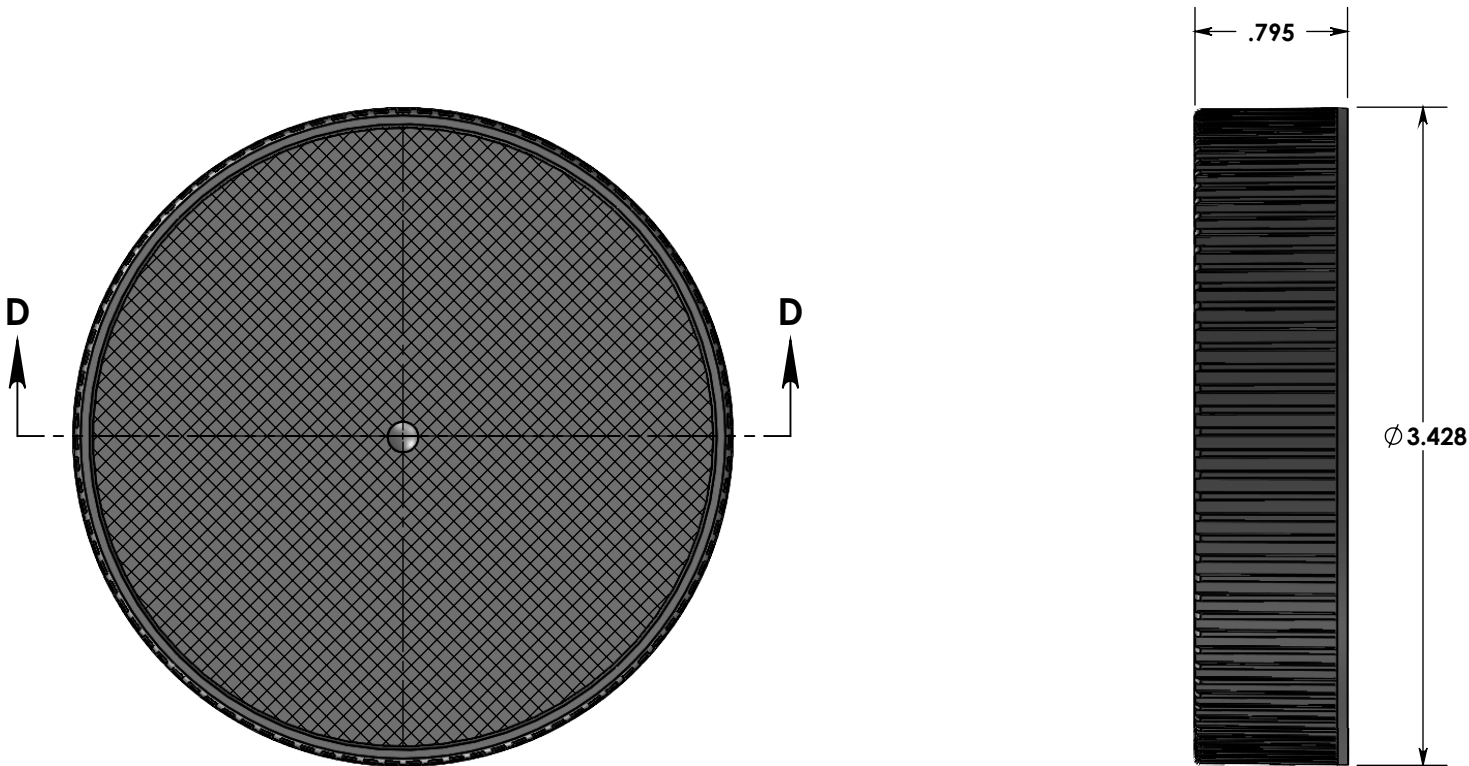
### Options

- Available in white, black, standard colors as well as custom colors
- Custom embossing available
- Both lined and unlined options available

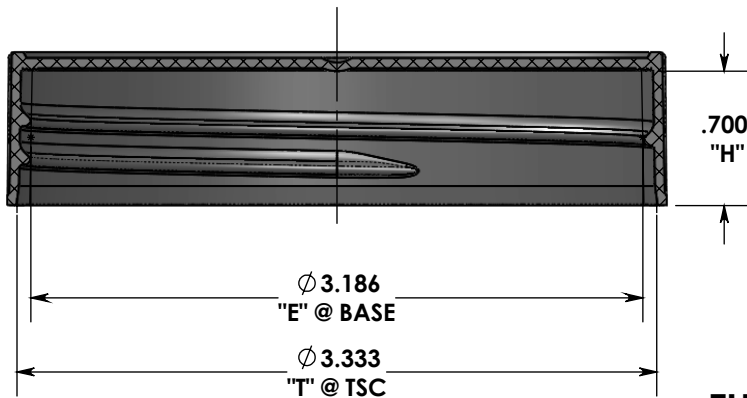
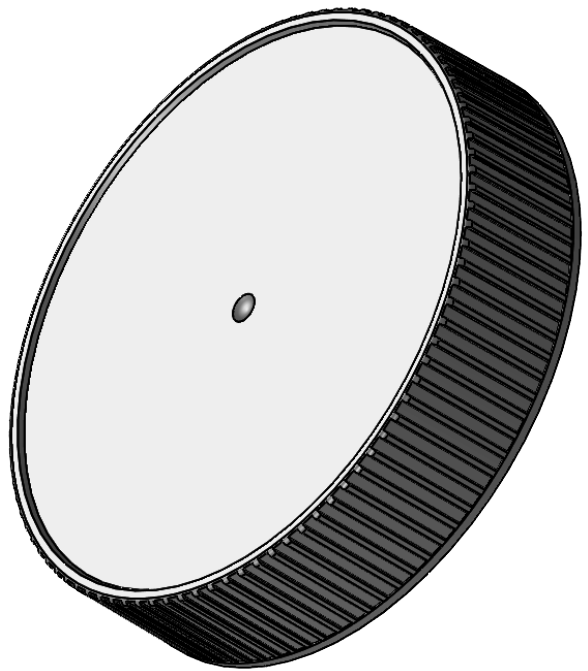
### Packaging and Logistics Information

Pack Type	Pallet Dimensions	PCS/CTN	CTNS/skid	PCS/skid	Freight
Skid	48 x 44 x 93	500	30	15,000	FOB Pitman, NJ 08071

**Location:**  
651 Lambs Road, Pitman, NJ 08071



TOP SURFACE AND RIBS ARE FINISHED MATTE  
 UNSPECIFIED EXTERIOR AREAS FINISHED SPI-A3  
 UNSPECIFIED INTERIOR AREAS FINISHED SPI-B2



**SECTION D-D**

ADVERTISING DRAWING  
 NOT FOR QUALITY CONTROL

**THREAD DATA:**  
**SPECIAL 89-444/470 FINISH**  
**.200 PITCH (5 TPI)**  
**APPROX 1-3/8 TURNS**

DIMENSIONS ARE IN INCHES	
TOLERANCES:	
FRACTIONAL	±1/32
ANGULAR	±1/2
TWO PLACE DECIMAL	±.03
THREE PLACE DECIMAL	±.015

PROPRIETARY AND CONFIDENTIAL	
THE INFORMATION CONTAINED IN THIS DRAWING IS THE SOLE PROPERTY OF COMET TOOL Co. ANY REPRODUCTION IN PART OR AS A WHOLE WITHOUT THE WRITTEN PERMISSION OF COMET TOOL Co. IS PROHIBITED.	
MATERIAL	
POLYPROPYLENE	
DRAWN BY	
JJM	

 <b>COMET TOOL COMPANY</b> 651 LAMBS RD. PITMAN, N.J 08071-2042					
<b>TITLE: SPECIAL 83-444/445 CT CLOSURE SERRATED WITH MATTE FINISH</b>					
PLASTIC PART NO.	PLASTIC PART REV.	DWG. NO.	SIZE	REV	DATE
1340-0001	*	1340-0001	A	*	7/21/21
				SCALE: 1:1	SHEET 2 OF 2