

38-400
Continuous Thread Closure
Smooth Finish

Comet Part Number: 1340-0134

Product Benefits

- General Purpose closure
- FDA approved

Closure Specifications

Diameter: 38mm
Thread Profile: 400
Neck Finish: 38-400
Cap Height: 0.393 inches
Closure Top: Smooth
Closure Sidewall: Smooth
Material: PP

Markets

- ❖ Agricultural products
- ❖ Dressing and Sauces
- ❖ Food
- ❖ Food Services
- ❖ Industrial Applications
- ❖ Medical Products
- ❖ Cosmetics
- ❖ Pharmaceuticals

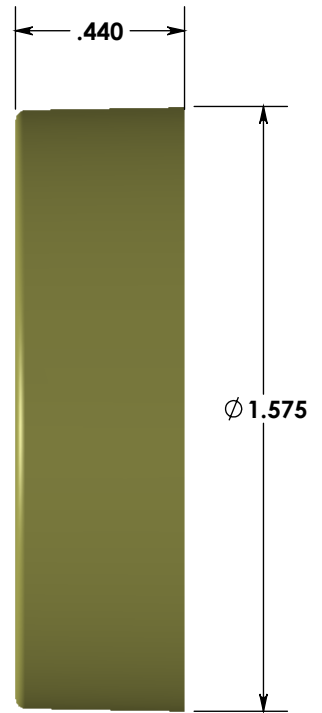
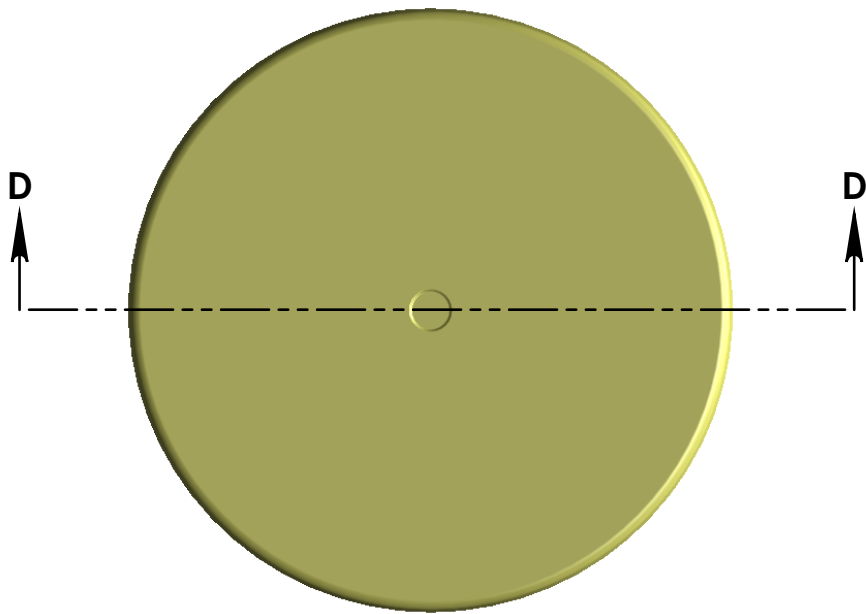
Options

- Available in white, black, standard colors as well as custom colors
- Custom embossing available
- Both lined and unlined options available

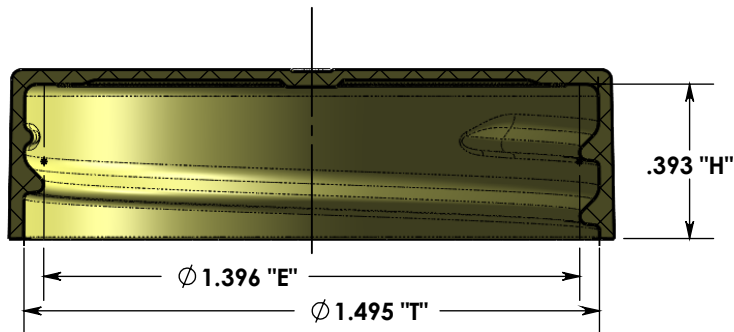
Packaging and Logistics Information

Pack Type	Pallet Dimensions	PCS/CTN	CTNS/PALT	PCS/skid	Freight
Skid	50 x 46 x 90	2,900	42	121,800	FOB Pitman, NJ 08071

Location:
651 Lambs Road, Pitman, NJ 08071

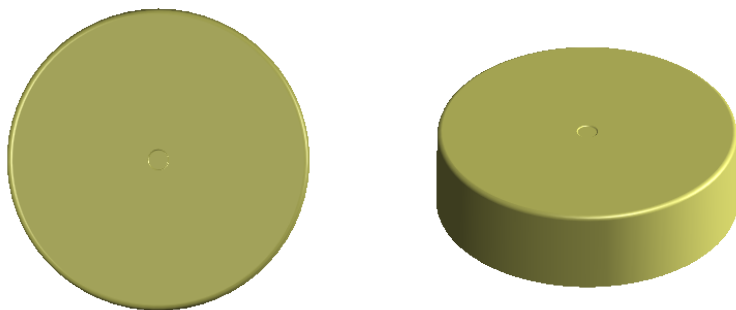


**EXTERIOR SURFACES FINISHED SPI-A2 POLISH.
UNSPECIFIED INTERIOR AREAS FINISHED SPI-B2**



SECTION D-D

**ADVERTISING DRAWING
NOT FOR QUALITY CONTROL**



**THREAD DATA:
38-400 FINISH
.167 PITCH (6 T.P.I.)
1 1/8 TURNS OF THD.**



UNLESS OTHERWISE SPECIFIED:
DIMENSIONS ARE IN INCHES
(X.XXXX) = REFERENCE DIMENSION
TOLERANCES:
FRACTIONAL: ±1/32
ANGULAR: ±1/2
TWO PLACE DECIMAL ±.030
THREE PLACE DECIMAL ±.015

PROPRIETARY AND CONFIDENTIAL
THE INFORMATION CONTAINED IN THIS DRAWING IS THE SOLE PROPERTY OF COMET TOOL Co. ANY REPRODUCTION IN PART OR AS A WHOLE WITHOUT THE WRITTEN PERMISSION OF COMET TOOL Co. IS PROHIBITED.
MATERIAL
POLYPROPYLENE
DRAWN BY
JJM



COMET TOOL COMPANY

651 LAMBS RD. PITMAN, N.J 08071-2042

TITLE:
**38-400 CT CLOSURE
SMOOTH TOP WITH RADIUS AND SMOOTH WALL**

PLASTIC PART NO.	PLASTIC PART REV.	DWG. NO.	SIZE	REV	DATE
1340-0134	*	1340-0134	A	*	7/21/21
SCALE: 2:1					SHEET 1 OF 1