

**110-400**  
**Continuous Threads**  
**Fine Serrated with Matte Finish**

Comet Part Number: 1340-0007

**Product Benefits**

- General Purpose closure
- Fine-ribbed sides for easy grip
- FDA approved

**Markets**

- ❖ Agricultural products
- ❖ Dressing and Sauces
- ❖ Food
- ❖ Food Services
- ❖ Industrial Applications
- ❖ Medical Products
- ❖ Cosmetics
- ❖ Pharmaceuticals

**Closure Specifications**

- Diameter: 110mm
- Thread Profile: 400
- Neck Finish: 110-400
- Cap Height: 0.584 inches
- Closure Top: Matte
- Closure Sidewall: Fine Ribbed
- Material: PP

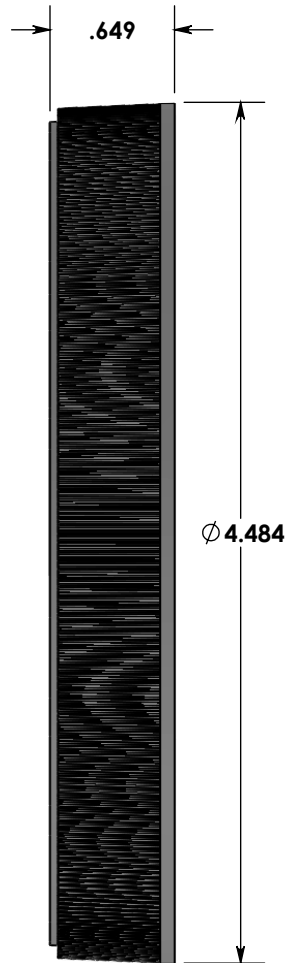
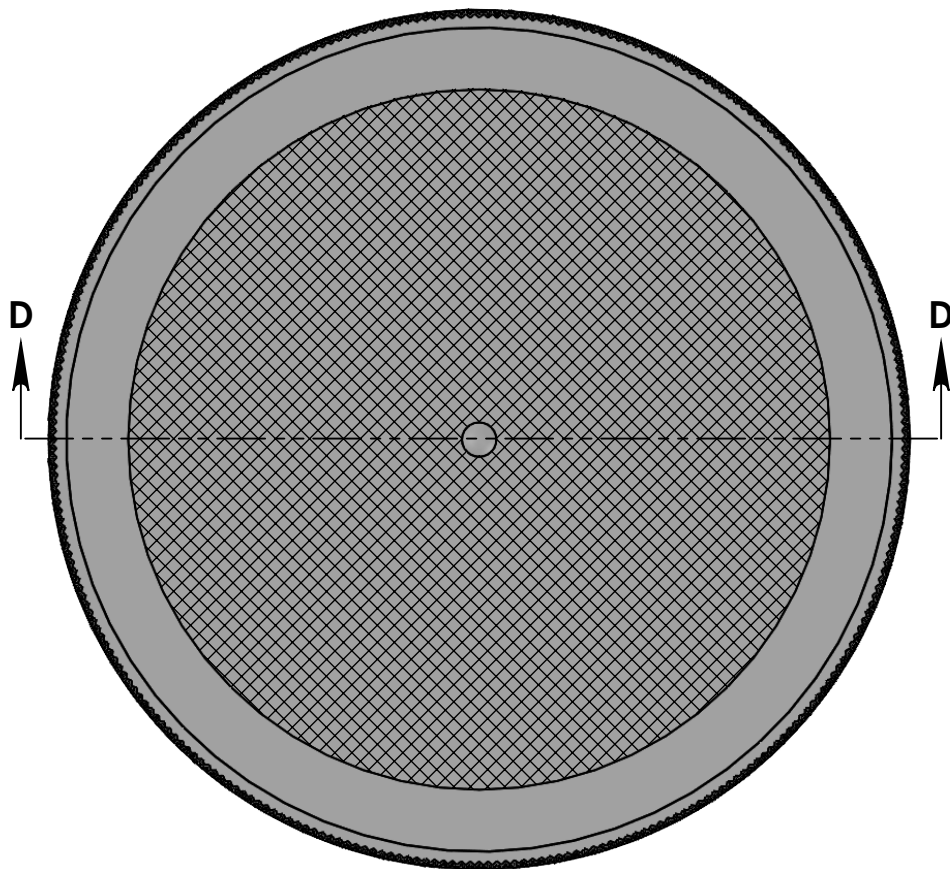
**Options**

- Available in white, black, standard colors as well as custom colors
- Custom embossing available
- Both lined and unlined options available

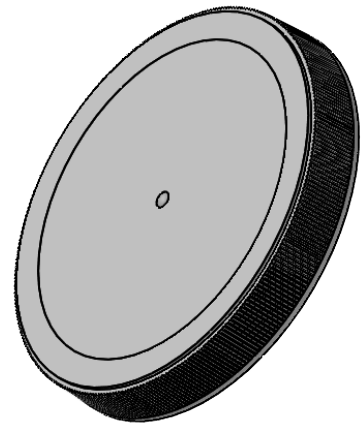
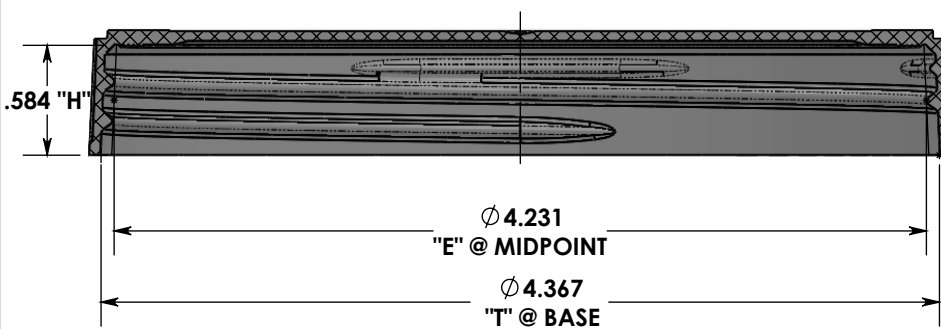
**Packaging and Logistics Information**

Pack Type	Pallet Dimensions	PCS/CTN	CTNS/skid	PCS/skid	Freight
Skid	48 x 44 x 86	400	24	9,600	FOB Pitman, NJ 08071

**Location:**  
 651 Lambs Road, Pitman, NJ 08071



TOP SURFACE AND RIBS ARE FINISHED MATTE  
 UNSPECIFIED EXTERIOR AREAS FINISHED SPI-A3  
 UNSPECIFIED INTERIOR AREAS FINISHED SPI-B2




**SECTION D-D**

**THREAD DATA:**  
**SPECIAL 110-400 FINISH**  
**.200 PITCH (5 TPI)**  
**APPROX 1-1/4 TURNS**

**ADVERTISING DRAWING**  
**NOT FOR QUALITY CONTROL**

DIMENSIONS ARE IN INCHES	
TOLERANCES:	
FRACTIONAL	±1/32
ANGULAR	±1/2
TWO PLACE DECIMAL	±.03
THREE PLACE DECIMAL	±.015

PROPRIETARY AND CONFIDENTIAL	
THE INFORMATION CONTAINED IN THIS DRAWING IS THE SOLE PROPERTY OF COMET TOOL CO. ANY REPRODUCTION IN PART OR AS A WHOLE WITHOUT THE WRITTEN PERMISSION OF COMET TOOL CO. IS PROHIBITED.	
MATERIAL	POLYPROPYLENE
DRAWN BY	JJM

 <b>COMET TOOL COMPANY</b> 651 LAMBS RD., PITMAN, N.J 08071-2042					
TITLE:					
<b>110-400 CT CLOSURE</b> <b>FINE SERRATED WITH MATTE FINISH</b>					
PLASTIC PART NO.	PLASTIC PART REV.	DWG. NO.	SIZE	REV	DATE
1340-0007	A	1340-0007	A	*	7/21/21
SCALE: 1:1					SHEET 2 OF 2